



www.profi-products.de

PROFI PRODUCTS
GERMANY

INNOVATIONS CREATE ORIGINALS



since
1991



The PROFI PRODUCTS applications reflect our passion for technology and innovation.

Our first priority hereby is always efficiency and user friendliness. Professional users worldwide appreciate the effectiveness of our measuring systems, which we produce in-house.

International distinctions, branch awards, TÜV certificates and patents attest our work, always consequently focused on customer's need.

If you have any questions, do not hesitate to contact us:

Tel: +49 6306 7017-0 / FAX: +49 6306 7017-17

We produce in Germany



The most popular products of our regular customers in the motorcycles and power-sports area are:

Profi CAT – Chain Alignment Tools
The articles of the PDL® product group.
PROFI DRY LUBE
PROFI FUEL MAX

We thank our customers for the trust and longtime loyalty.

Further information: www.profi-products.de



www.profi-products.de - developers experience for maximum value in use



Since 1977 (Z1000-A1), O-ring chains have been used on motorcycles. PDL® PROFI DRY LUBE has been specially developed for the lubrication of these sealing ring chains and has proven itself since 1995.

Our customers know:
PDL is not sticky - seals last longer!
PDL cannot be thrown off!
Everything stays clean!

PDL® warranty:
Spray and go! If a splash of PDL® can be seen on your rim, you will receive your money back.



The PDL® active ingredients are extremely capable of creep, act under the chain rollers and are dry after a minute, not sticky!

The function of O, X, Z rings increases.
Less chain tensioning.
Long time test measurements (determined with a TÜV-certified measurement device) demonstrate the unique PDL® DRY LUBE effectiveness.

NEW

With PDL® Base Treatment you can now prepare the chain without any difficulty—easily while driving. Annoying chain cleaning is completely eliminated.





PDL - BASE TREATMENT...

...is cleaner and transitional lubricant in one application.

Removes dirt-binding chain sprays.
-Easy and effortless while driving-

Crustifications (under the chain rollers) are pressed out during the "cleaning rides". Afterwards, the lubrication gaps are free for fresh lubricant.

-Annoying chain cleaning work is eliminated.
-Also with grease / fat spray treated chains can be conveniently changed to PDL® Dry Lube.
-There is no dirt-binding when it comes to the care of axles, levers and hinges.

NEU

PDL® - proven technology now also available for E-Bikes

PROFI PRODUCTS GERMANY since 1991



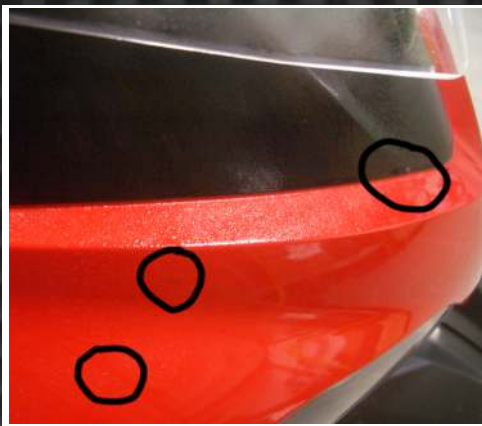
As a perfect, clean lubrication of E-Bike-, Mountain-Bike- and Pedelec chains, Profi Dry Lube has been an “insider tip” long ago.

After all, PDL® Dry Lube has been proven itself in all motorcycle categories since 1995.

- Base Treatment facilitates the cleaning.
- By the use of PDL® E-Bike the chain, derailleur and deflection rollers remain clean.
- The high pressure resistance of the Profi Dry Lube components protects against wear.



www.profi-products.de - developers experience for maximum value in use



“Foggy” thin applied, the active components work immediately. After 30 seconds PDL®-FOG UP is wiped off.

The professionals in the workshop love it: In a matter of seconds, all surfaces are clean and the vehicle is ready for handover.

-Very efficient - without aggressive ingredients!
-Shining and streak-free metal, chrome, plastics or painted (also matt paint) surfaces.

Less is more! PDL® FOG UP POLISH

Test for yourself!
Introductory offers at: www.profi-products.de.
For helmet visors a 50ml pocket bottle is available.

the original since 1997 - Carburetor additive for motorcycles



PROFI FUEL MAX works already after the first 6 to 10 miles driving. The usual problems - after longer periods – are simply disappeared!

- 1/3 of the bottle is enough for the motorcycle.
- Immediately noticeable smooth engine operation and clean throttle response.

Also at workshop services Profi Fuel Max is gladly used. The good starting behavior for used vehicles (uncertain service life) is maintained.

- Also applicable preventive (before winterizing).

(For carburetor, injectors-with cat and diesel)





No matter how conscientious you are, after work always the same question arises:
Is my setting correct?

With Profi CAT (Chain Alignment Tools) you can check the chain alignment in seconds.

- Chain or Belt accurately aligned
- More safety through perfect driving dynamics
- A must for powerful motorcycles

Work like the professionals:
SE-CAT for motorcyclists – now with line laser technology.
D-CAT and L-CAT (lighter in weight and with sliding switch) are workshop versions.

also popular for industrial applications



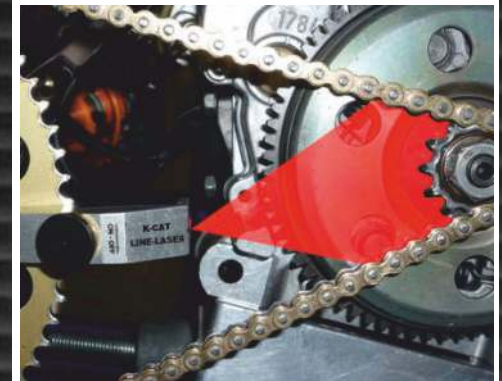
The line laser version lights in a line over the edge region of the chain. As well the belt alignment is done so quickly.

- Application errors are impossible.

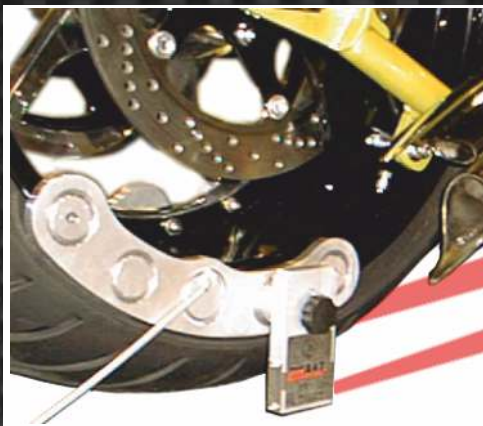
Additional we produce the patented chain alignment tools for race kart and as base line laser measuring units for DTM car racing.

L-CAT Chain Alignment Tools are also available in an industrial magnetic design.

Product overview:
www.profi-products.de/Profi-CAT Laser



NEW - Line laser shows two dimensions



Besides the user-friendly handling, the precision has the highest priority. That is why we produce the patented measuring systems in-house.

- Max. tolerance: < 0,025%
- Measuring gauge located on the rim horn.

The line lasers make possible tolerances in the chassis geometry visible in seconds.

- P-BAT (Customizer – motorcycle designer)
- S-BAT (MC with regular ground clearance)
- SE-BAT (Scooter and private users)
- TA-Spyder **NEW** (Spyder-Track Adjustment)

Detailed product information:
www.profi-products.de/Profi-BAT Laser

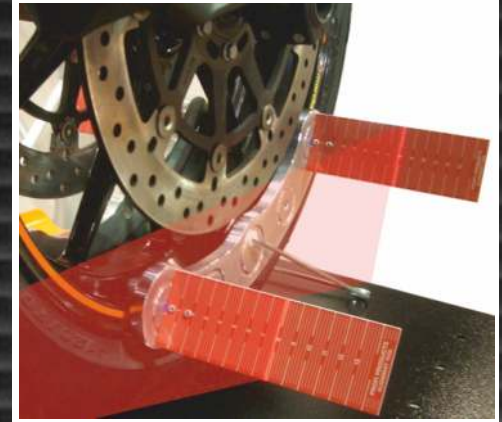
high utility value at low purchasing prices



The net costs for the professional user are well below a thousand euro. Whereby the Laser BAT (Bike Alignment Tool) devices are characterized by their durability, minimal changeover time and effectiveness for many years:

- Estimates for insurers.
- Chassis check on pre-owned vehicles.
- Time savings in reconstructions and services on behalf of customers.

The Profi-Products Laser meters support the workshops know-how and make physical principles for single-track vehicles auditable.





The line lasers show two levels. The P-QAT (Quad / ATV Alignment Tool) is the fastest and most cost-effective method to determine the symmetrical adjustment of toe-in and camber.

- For new vehicles – confident driving experience from the first drive!
- More safety and driving pleasure for customers.

If the front-measuring boards are oriented horizontally, toe-in or toe-out is adjusted. In the vertical position, the camber is adjusted.

- Minimal setup times in use.
- Suitable for rims of 8" to 16".
- Low purchase cost.

in sealing ring chains tenths millimeters are essential



Chain manufacturers allow a maximum increase in length of 0.6% for sealing ring chains (these are 1.6 mm / 20 chain links by 500er chain).

Many motorcyclists are not aware of this, because in the past (open roller chain) the maximum increase in length was 2% and this 6 mm could be controlled by “visual judgment”.

- Correct measurement creates clearness here.

Customers recognizes the technical difference and they are grateful for correct information. Digital CEM is our patented, TÜV-certified measuring device for the determination of wear. More on the web at Digital CEM





...official supplier for smart motorcyclists!

Feel free to contact us:

Prices, fill quantities, technical data and user information can be found in the shop.
Guest orders are possible – we ship worldwide:

www.profi-products.de

PROFI PRODUCTS

Flörsheimer Ring 6
D-67705 Trippstadt

☎ +49 6306 7017-0

📠 +49 6306 7017-17

info@profi-products.de

